

INSTRUCTIONS FOR CR1R®

For TV or TV and separate Cable box only (will not work TV/DVD, TV/VCR or TV/DVD/VCR combination units)
Works over 250 brands of commercial and retail TV's
Simple One touch set-up (no codes needed)
No Menu Button - So Patients and Guests cannot change settings
Hidden Battery compartment and attached door to help prevent batteries from being taken
Uses 2 AAA batteries
Will not operate with LodgeNet® or On Command® movie systems

Battery Installation:

1. Open cover: With keypad facing you, first slide dark lens cover away from you (photo A, step 1) and then lift lid upward from the back (photo A, step 2)
2. When placing AAA batteries in the compartment note the + and - symbols on the metal hinge should make contact with the corresponding + and - end of each battery (photo B).
3. Closing cover: **With keypad facing away from you** gently close cover by pressing downward (photo C, step 1) and sliding it toward the front (keypad) until it is aligned. (photo C, step 2)
4. Test remote by pressing the power button; the LED should light indicating that the batteries are in correctly. If the LED doesn't light, then the batteries are either in wrong or the batteries are bad.

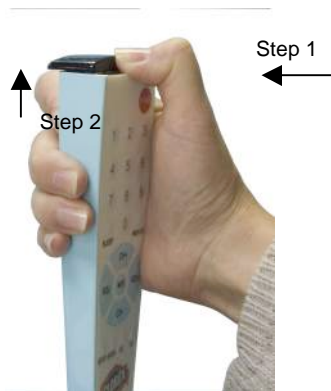


Photo A

Open with keypad facing you



Photo B

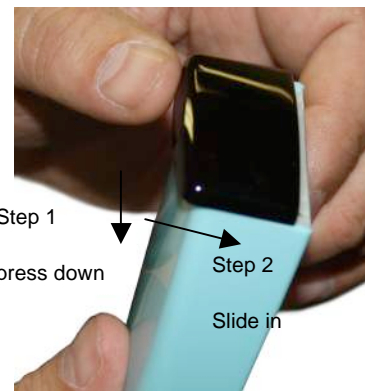


Photo C

Close with **keypad facing away** from you



NO CODE ENTRY/ONE STEP PROGRAMMING

If you have an Individual cable box in each room turn over page

1. Turn on the TV and then **stand back about 5 feet from TV and Point the remote at the CENTER of the front panel of the TV.** It will not be necessary to point the remote at that exact area once the remote is set-up.
2. **Press and firmly Hold** down the **Setup** button, do not release. The LED will blink once and then after 7 seconds it will initiate code search. The LED will continue to blink every 2 seconds. Once your TV shuts off immediately remove your finger from the Setup button; the code automatically locks in.
3. Test the remote. If everything works, you are done. If the main functions are not working properly, you may not have an exact code match. Start again at step #1. The code search will continue where it left off.

Important Note: If you think you missed the code or are testing remote on different brand TV's: Reset the remote back to the beginning of the code search; first press and hold the Setup button for 3 seconds and then while still pressing the Setup button down, press and hold the CC button down at the same time until the red LED light blinks quickly 3 times, then release both buttons. You have now reset the code list back to the beginning. Go back to step 1.

INSTRUCTIONS FOR NEW CLEAN REMOTE CR1R THAT HAS ⊛ BUTTON AT THE TOP OF THE REMOTE

If you **do not** have an individual cable box in each guest room, then turn sheet over to **page 1**

IF YOU HAVE A TV AND AN INDIVIDUAL CABLE BOX IN EACH GUEST ROOM, START HERE :

- 1. First step is to program the TV. The second step will then be to program the cable box.**
- 2. It is important that after you set up the TV you don't change the channels until after you complete the next step of setting up cable box.**
3. Turn on the TV and the Cable Box should also be on. Then **stand back about 5 feet from the TV. Point the remote at the CENTER of the front panel of the TV.** It will not be necessary to point the remote at that exact area once the remote is set-up.
4. **Press and firmly Hold down the Setup button**, do not release. The LED will blink once and then after 7 seconds it will initiate code search. The LED will continue to blink every 2 seconds. Once your TV shuts off, immediately remove your finger from the Setup button; the code automatically locks in.
5. Now test the remote by pressing the TV Power button testing **On/Off and then the VOLUME + /- ,**
DO NOT PRESS CHANNEL +/- buttons as you may change input on TV.
If power and volume buttons work correctly on the remote then proceed to step #6.
If you accidentally changed the input on the TV, manually change it back from the TV's control panel and then try power and volume buttons **ONLY**.
If the power and volume keys are not working properly, you may not have an exact code match. Start again at step #3, the code search will continue where it left off. Once you have the correct code, go to step #6 to program the cable box.
6. **To Program the Cable Box** make sure the cable box and TV are on. Next, **Hold Down the ⊛ button and CC button at the same time** and wait until the LED light blinks quickly 3 times. Then immediately release both buttons. Now point the remote toward the cable box and TV and try the channel up and down buttons as well as the the channel numbers. If the channels change correctly, make sure volume and TV power on and off work and if they do ,you are done.
7. If the channels are not changing properly make sure the **TV is on** and this time **turn the cable box OFF.**
NOTE: this time **DO NOT HOLD THE CC button down, just press and firmly hold down the ⊛ button** while pointing the remote at the cable box (not the TV). The LED will blink once and then after 10 seconds it will initiate code search. The LED will continue to blink every 2 seconds. When the cable box turns ON, **immediately** remove your finger from the button and the code automatically locks in.
Now turn the CABLE box off and then back on by pressing the **CBL button** once (**Not the TV power button or ⊛ button**). Next test channel up and down and the channel numbers. If the channels change correctly, make sure volume and TV power on and off operate, if so, you are done. If it is not working properly start again at step #6.

IMPORTANT TROUBLESHOOTING INFORMATION

- A. If you think you missed the TV code or are testing remote on different brand TV's**, or are having difficulty operating TV; first, reset the remote by **pressing and holding the Setup button for 2 seconds** and then **while still pressing the Setup button down press and hold down the CC button** at the same time until the LED light blinks quickly 3 times, immediately release both buttons. You have now reset the code list back to the beginning. Go back to step #1 and repeat all steps #1 through #7 again.
 - B. Reset remote to work TV only without a cable box.**
If you've already set up the remote to work both a TV and a Cable Box and now wish to operate TV only without a cable box. Hold down the CBL button and SETUP button together until the remote blinks 3 times quickly and immediately release both buttons. Then turn over the page and start at step 1 for TV only.
- Note:** Many cable boxes do not have a separate power button and are always on. If your cable box does have a separate power button, once you have set-up the cable box to work with the Clean Remote it can be powered on or off by pressing the CBL button.